

SV06DNS *SCISSOR LIFTS*



SV06DNS provides high performance with proportional steering system at working sites.

SV06DNS achieves long duty cycle and battery power saving with AC motor drive.

1

LONG DUTY CYCLE

AC Driving Motor improves duty cycle by *150% more as compared to our previous similar model (SV-B Series).

In addition, the Brushless motor will contribute to reducing the running cost.

(※ Above was measured by Aichi standard.)

2

SMOOTH STEERING SYSTEM

Proportional Steering Control System offers smooth operation.

Joystick Controller. (Optional)

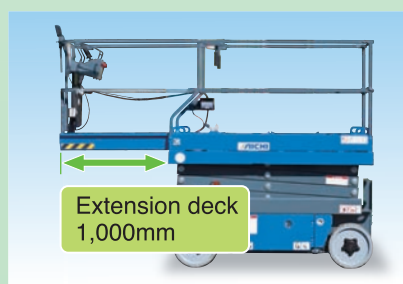
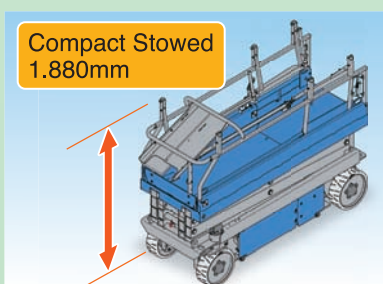


3

COMPACT BODY & LARGE PLATFORM

Compact Stowed position with Fold Down Guardrail

1.78m Platform length plus Extension deck (1.0m)





■ WIDE RANGE OF CHARGING VOLTAGE

AC100-240V can be used.



■ SLIDE-OUT TRAY

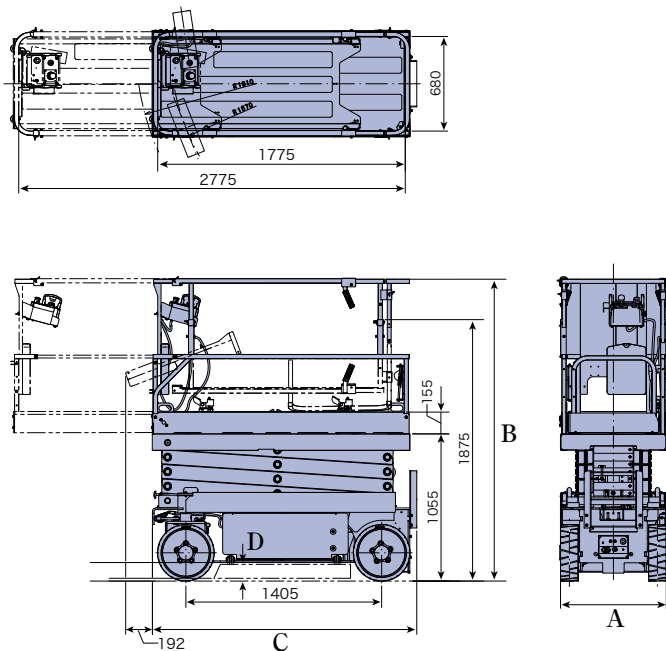
Battery maintenance can be performed by slide-out tray.



■ EASY ACCESS TO MAJOR COMPONENT

Swing-out tray enables easy access to major components for maintenance and repair.

DIMENSIONS



SPECIFICATIONS

● MODEL		SV06DNS
● PLATFORM		
Platform Capacity		230kg
Platform Extension		1.0m
Extension Deck Capacity		120kg
Platform Height-Elevated		5.8m
Platform Height-Lowered		1.06m
Platform Size		1.78m×0.68m×1.1m
● LIFT & LOWER SYSTEM		
Type		4 scissors link
Lifting / Lowering Time		25sec
● POWER SYSTEM		
Batteries		24V DC (4units of 6V 185Ah)
Tyre Type		Solid non-marking
● TRAVEL DEVICE		
Speed		Max 4.5km/stowed, 0.8km/lifted
Gradeability		25% (14degree)
● DIMENSION		
A Overall Width		0.76m
B Overall Height		2.16m
C Overall Length		1.90m
D Ground Clearance		0.13m/stowed, 0.02m/pot hole
Vehicle Weight		1,500kg
Vehicle Weight (CE)		1,640kg
● OPTIONS		
Joystick Controller, Working Light, Flashing Beacon		

*Standards Compliance ANSI, CE, KC-Mark

*Specifications are subject to change without notice.

AICHI CORPORATION

Overseas Marketing & Sales Department

<http://www.aichi-corp.jp/english/>

DISTRIBUTORS